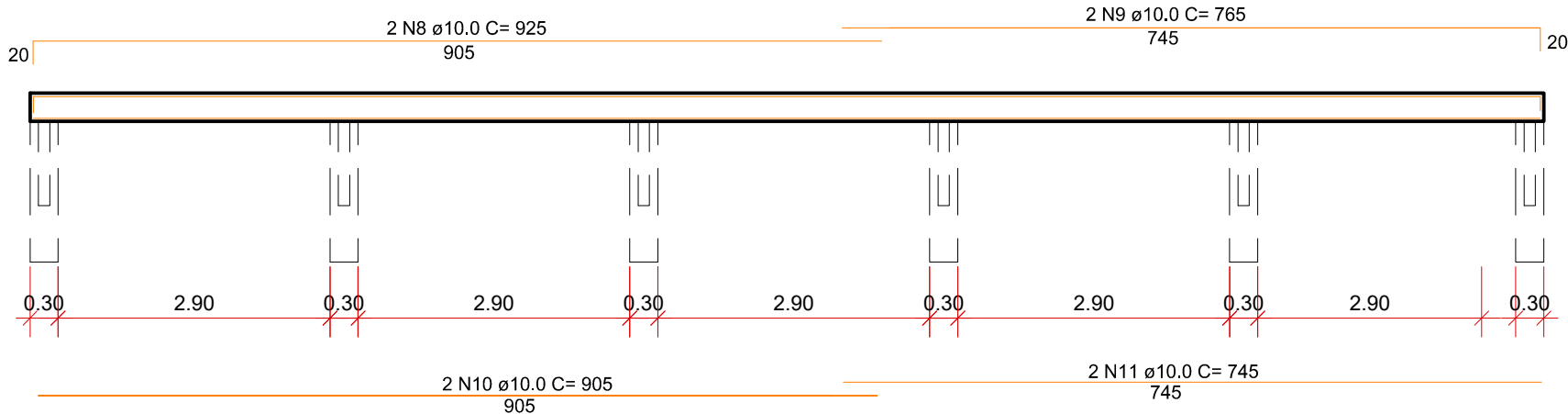
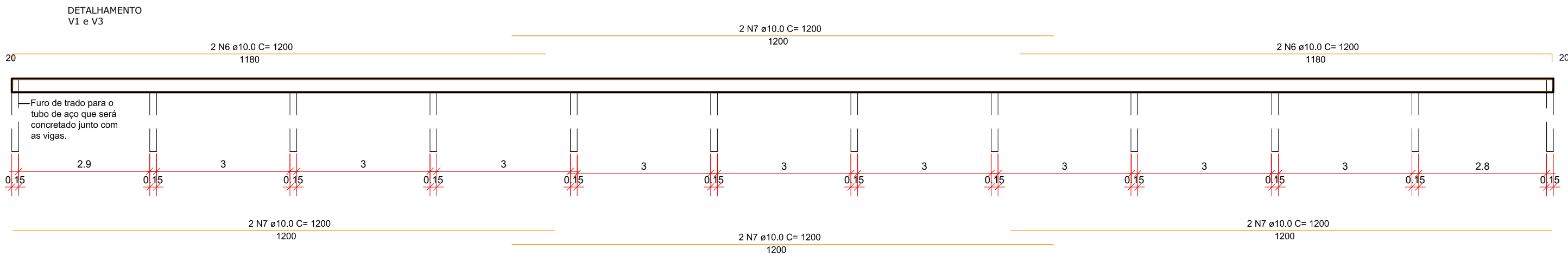
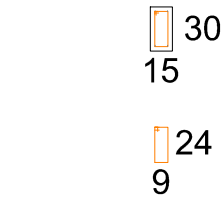
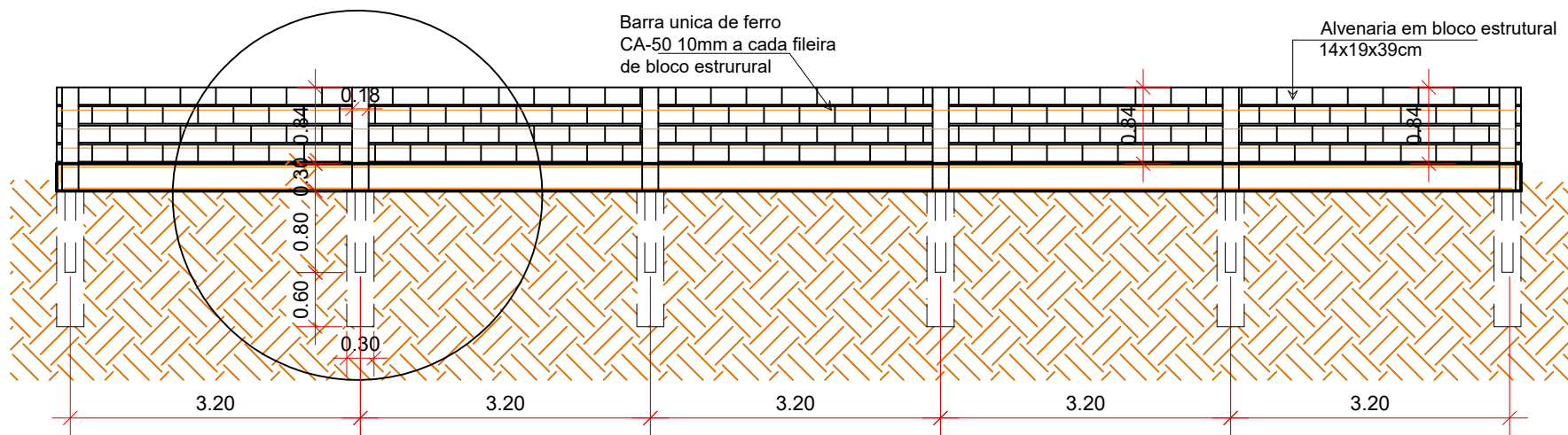
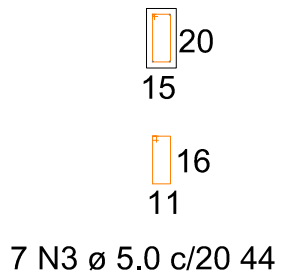


LEGENDA	
E	ESTACA
P	PILAR
V	VIGA



DETALHAMENTO P1 A P12

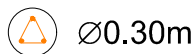


170 N2 Ø 5.0 c/20 70



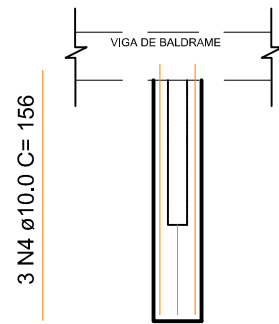
170 N2 Ø 5.0 c/20 70

DETALHAMENTO ESTACA

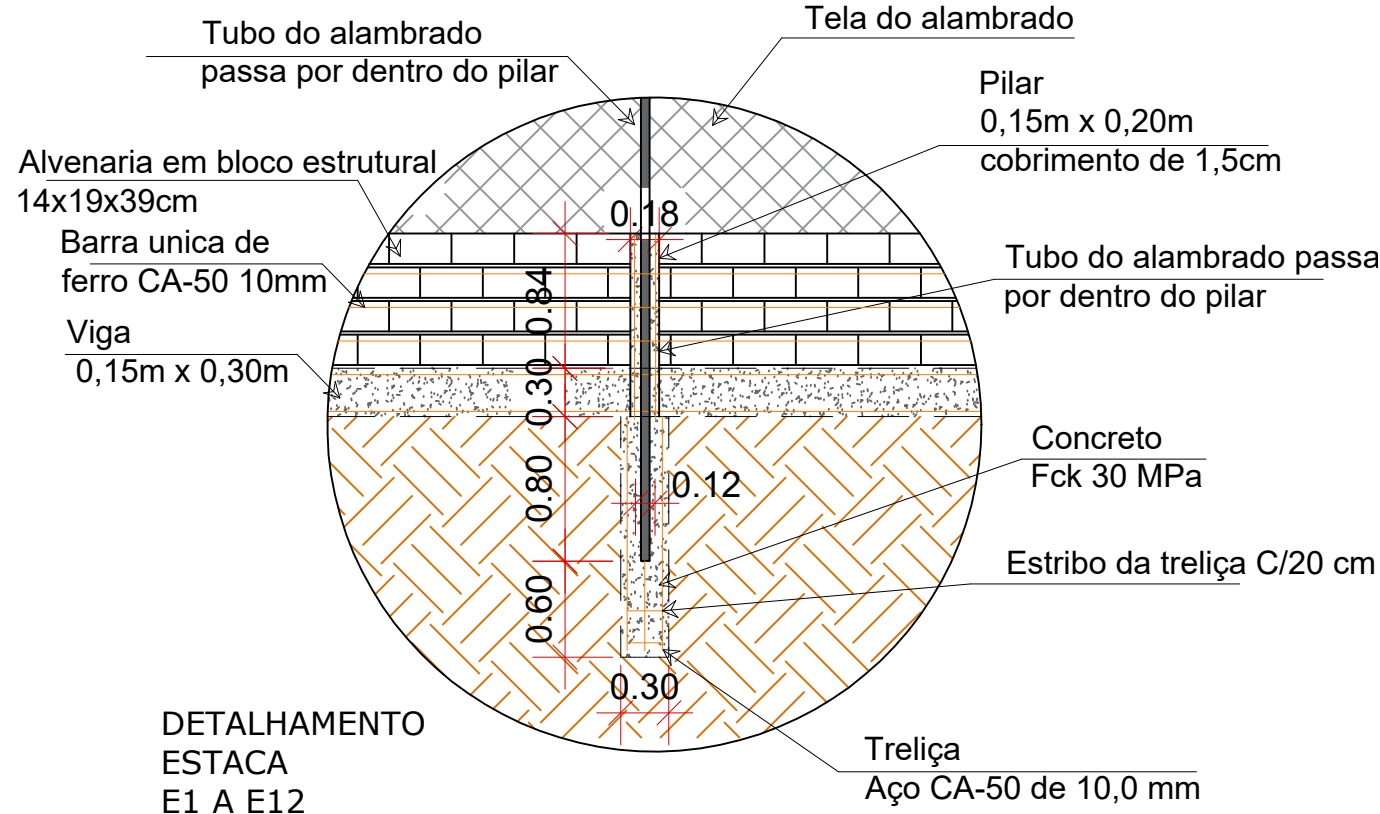
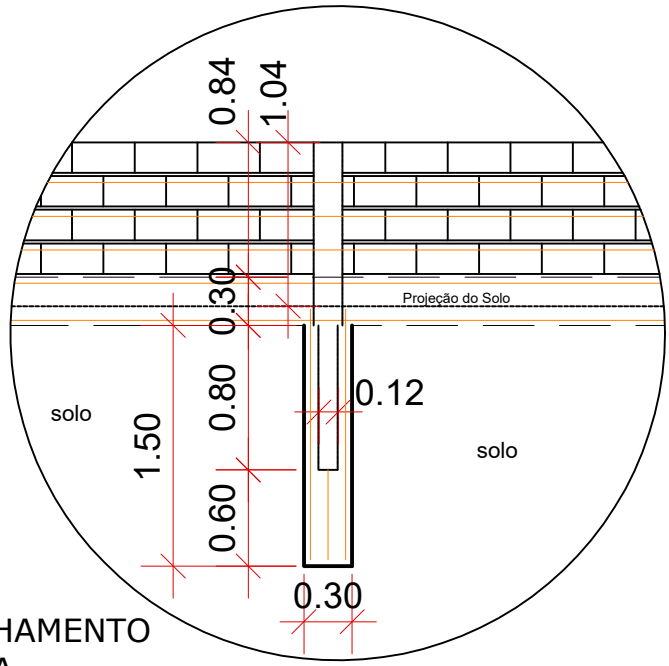


17/17

7 N1 Ø 5.0 c/20 51



DETALHAMENTO ESTACA E1 A E12



DETALHAMENTO ESTACA E1 A E12

Vigas Baldrame, Sapatas e Pilares					
AÇO	NOMENC.	DIÂMET.	QUANT	UNIT (cm)	COMP. TOTAL (cm)
CA 60	N01	Ø 5.0	84	51	4284
	N02	Ø 5.0	560	70	39200
	N03	Ø 5.0	98	44	4312
CA 50	N04	Ø 10.0	36	156	5616
	N05	Ø 10.0	48	122	5856
	N06	Ø 10.0	8	1200	9600
	N07	Ø 10.0	16	1200	19200
	N08	Ø 10.0	4	925	3700
	N09	Ø 10.0	4	765	3060
	N10	Ø 10.0	4	905	3620
	N11	Ø 10.0	4	745	2980
	N12	Ø 10.0	8	1200	9600

RESUMO DO AÇO UTILIZADO NAS SAPATAS, PILARES, VIGAS BALDRAMES E VIGAS DE COBERTURA

AÇO	DIÂMET.	COMP. TOTAL (cm)	PESO (kg)	QUANT. BARRAS
CA 60	Ø 5.0	47796	74	40
CA 50	Ø 10.0	63232	392,2	53

DESENVOLVIMENTO E GERENCIAMENTO

GABINETE DO DEPUTADO MARCIUS MACHADO



PROJETO ESTRUTURAL

RESPONSÁVEL TÉCNICO:

MICHELE PILAR APOLINÁRIO

ENG. CIVIL - CREA 115469-2

CREA-SC 115469-2

PROPRIETÁRIO DO EMPREENDIMENTO:

PREFEITURA DE BOM RETIRO

RUA GENEROSO IDELFONSO DE OLIVEIRA

82.777.343/0001-21 (CNPJ)

CONTEÚDO:

PLANTA BAIXA - DETALHES - CORTES

OBS:

ÁREA DO CAMPO: 544,00M²

DESENHO:

FRANCIELI G. DOS REIS - TÉCNICA EM EDIFICAÇÕES

DATA:

JULHO 2021

Nº DO DESENHO:

EST 05/05