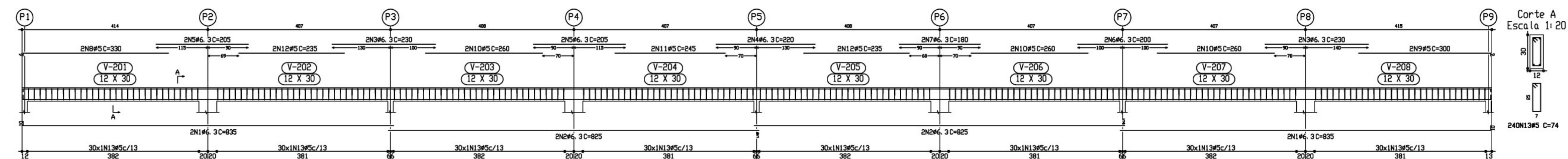


Pórtico 1
Escala 1:50

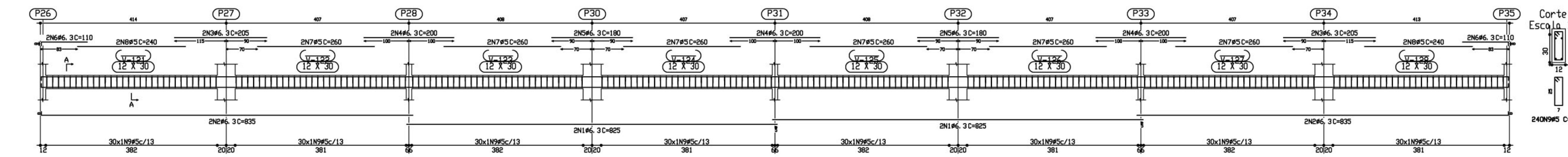


TELO
Desenho de vigas
Barras C20, em geral
Aço: CA-50-A e CA-60-B
Escala: pórtico: 1:50
Escala: seção: 1:20

Resumo Aço	Comp. total (m)	Peso+10% (Kg)	Total
CA-50-A #6.3	511.7	139	
#8	408.0	176	
#10	62.2	43	
#12.5	13.9	15	
#16	73.7	127	500
CA-60-B #5	1983.0	342	342
Total			842

Elemento	Pos.	Diam.	Q.	Pat. (cm)	Recta (cm)	Pat. (cm)	Comp. (cm)	Total (cm)	CA-50-A (Kg)	CA-60-B (Kg)	
Pórtico 1	1	#6.3	4	825	825	10	835	3340	8.3		
	2	#6.3	4	825	825	10	835	3340	8.3		
	3	#6.3	4	250	250	10	260	1040	2.6		
	4	#6.3	4	250	250	10	260	1040	2.6		
	5	#6.3	4	250	250	10	260	1040	2.6		
	6	#6.3	4	250	250	10	260	1040	2.6		
	7	#6.3	4	180	180	10	190	760	1.9		
	8	#5	2	324	324	6	330	1312		1.0	
	9	#5	2	294	294	6	300	1200		0.9	
	10	#5	2	260	260	6	266	1064		0.4	
	11	#5	2	245	245	6	251	1006		0.8	
	12	#5	2	235	235	6	241	966		1.5	
	13	#5	2	240	240	7	247	1774		27.9	
Total+10%									26.2	38.0	
									#5	0.0	38.0
									#6.3	26.2	0.0
Total									26.2	38.0	

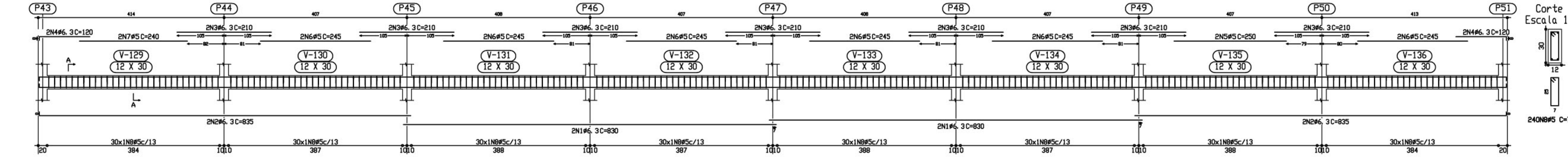
Pórtico 4
Escala 1:50



CINTAS
Desenho de vigas
Barras C20, em geral
Aço: CA-50-A e CA-60-B
Escala: pórtico: 1:50
Escala: seção: 1:20

Elemento	Pos.	Diam.	Q.	Pat. (cm)	Recta (cm)	Pat. (cm)	Comp. (cm)	Total (cm)	CA-50-A (Kg)	CA-60-B (Kg)	
Pórtico 4	1	#6.3	4	825	825	10	835	3300	8.2		
	2	#6.3	4	827	825	10	837	3340	8.3		
	3	#6.3	4	250	250	10	260	1020	2.6		
	4	#6.3	4	250	250	10	260	1020	2.6		
	5	#6.3	4	180	180	10	190	720	1.8		
	6	#6.3	4	180	180	10	190	720	1.8		
	7	#5	2	250	250	6	256	1020		4.9	
	8	#5	2	240	240	6	246	960		1.5	
	9	#5	2	240	240	7	247	1770		27.3	
Total+10%									26.8	37.9	
									#5	0.0	37.9
									#6.3	26.8	0.0
Total									26.8	37.9	

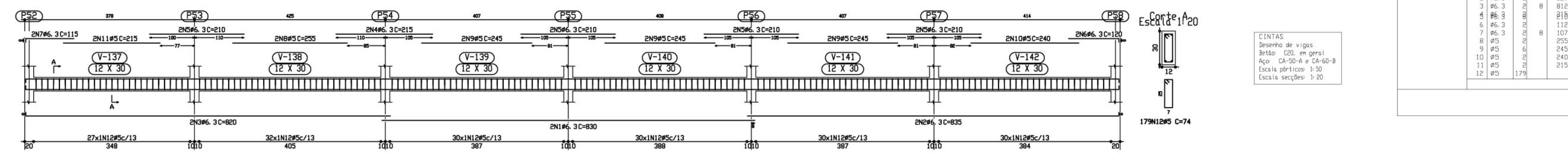
Pórtico 5
Escala 1:50



CINTAS
Desenho de vigas
Barras C20, em geral
Aço: CA-50-A e CA-60-B
Escala: pórtico: 1:50
Escala: seção: 1:20

Elemento	Pos.	Diam.	Q.	Pat. (cm)	Recta (cm)	Pat. (cm)	Comp. (cm)	Total (cm)	CA-50-A (Kg)	CA-60-B (Kg)	
Pórtico 5	1	#6.3	4	830	830	10	840	3300	8.2		
	2	#6.3	4	830	830	10	840	3300	8.2		
	3	#6.3	4	250	250	10	260	1020	2.6		
	4	#6.3	4	250	250	10	260	1020	2.6		
	5	#6.3	4	180	180	10	190	720	1.8		
	6	#6.3	4	180	180	10	190	720	1.8		
	7	#5	2	240	240	6	246	960		1.5	
	8	#5	2	240	240	7	247	1770		27.9	
Total+10%									27.5	37.5	
									#5	0.0	37.5
									#6.3	27.5	0.0
Total									27.5	37.5	

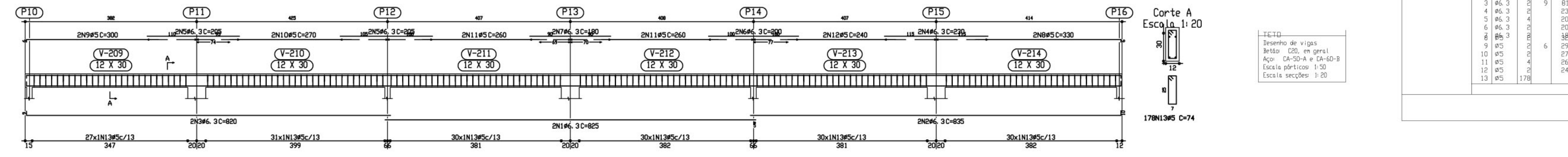
Pórtico 6
Escala 1:50



CINTAS
Desenho de vigas
Barras C20, em geral
Aço: CA-50-A e CA-60-B
Escala: pórtico: 1:50
Escala: seção: 1:20

Elemento	Pos.	Diam.	Q.	Pat. (cm)	Recta (cm)	Pat. (cm)	Comp. (cm)	Total (cm)	CA-50-A (Kg)	CA-60-B (Kg)	
Pórtico 6	1	#6.3	8	830	830	10	840	3300	4.1		
	2	#6.3	8	827	825	10	837	3270	4.1		
	3	#6.3	8	218	218	10	228	900	2.3		
	4	#6.3	8	218	218	10	228	900	2.3		
	5	#6.3	8	112	112	10	122	480	0.6		
	6	#6.3	8	112	112	10	122	480	0.6		
	7	#5	2	255	255	6	261	1020		0.8	
	8	#5	2	245	245	6	251	960		0.8	
	9	#5	2	240	240	6	246	960		0.8	
	10	#5	2	240	240	7	247	1000		0.7	
	11	#5	2	215	215	7	222	850		0.8	
Total+10%									26.7	27.9	
									#5	0.0	27.9
									#6.3	26.7	0.0
Total									26.7	27.9	

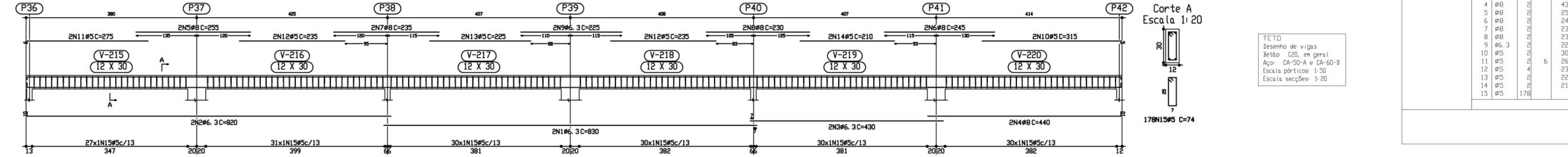
Pórtico 2
Escala 1:50



TELO
Desenho de vigas
Barras C20, em geral
Aço: CA-50-A e CA-60-B
Escala: pórtico: 1:50
Escala: seção: 1:20

Elemento	Pos.	Diam.	Q.	Pat. (cm)	Recta (cm)	Pat. (cm)	Comp. (cm)	Total (cm)	CA-50-A (Kg)	CA-60-B (Kg)	
Pórtico 2	1	#6.3	8	825	825	10	835	3300	4.1		
	2	#6.3	8	811	811	10	821	3240	4.1		
	3	#6.3	8	230	230	10	240	900	2.3		
	4	#6.3	8	230	230	10	240	900	2.3		
	5	#6.3	8	180	180	10	190	720	1.8		
	6	#6.3	8	180	180	10	190	720	1.8		
	7	#5	2	384	384	6	390	1512		0.9	
	8	#5	2	354	354	6	360	1440		0.9	
	9	#5	2	324	324	6	330	1320		0.9	
	10	#5	2	270	270	6	276	1080		0.8	
	11	#5	2	260	260	6	266	1064		0.8	
	12	#5	2	240	240	6	246	984		0.8	
	13	#5	2	240	240	7	247	1312		26.7	
Total+10%									19.0	28.4	
									#5	0.0	28.4
									#6.3	19.0	0.0
Total									19.0	28.4	

Pórtico 3
Escala 1:50



TELO
Desenho de vigas
Barras C20, em geral
Aço: CA-50-A e CA-60-B
Escala: pórtico: 1:50
Escala: seção: 1:20

Elemento	Pos.	Diam.	Q.	Pat. (cm)	Recta (cm)	Pat. (cm)	Comp. (cm)	Total (cm)	CA-50-A (Kg)	CA-60-B (Kg)	
Pórtico 3	1	#6.3	8	830	830	10	840	3300	4.1		
	2	#6.3	8	430	430	10	440	1740	2.1		
	3	#6.3	8	440	440	10	450	1800	2.1		
	4	#6.3	8	250	250	10	260	1020	2.6		
	5	#6.3	8	250	250	10	260	1020	2.6		
	6	#6.3	8	245	245	10	255	1000	2.5		
	7	#5	2	255	255	6	261	1020		1.8	
	8	#5	2	255	255	6	261	1020		1.8	
	9	#6.3	8	325	325	6	331	1326		1.1	
	10	#5	2	309	309	6	315	1260		1.0	
	11	#5	2	285	285	6	291	1140		0.9	
	12	#5	2	270	270	6	276	1080		0.8	
	13	#5	2	260	260	6	266	1064		0.8	
	14	#5	2	240	240	6	246	984		0.7	
	15	#5	2	240	240	7	247	1312		26.7	
Total+10%									24.6	28.1	
									#5	0.0	28.1
									#6.3	24.6	0.0
Total									24.6	28.1	