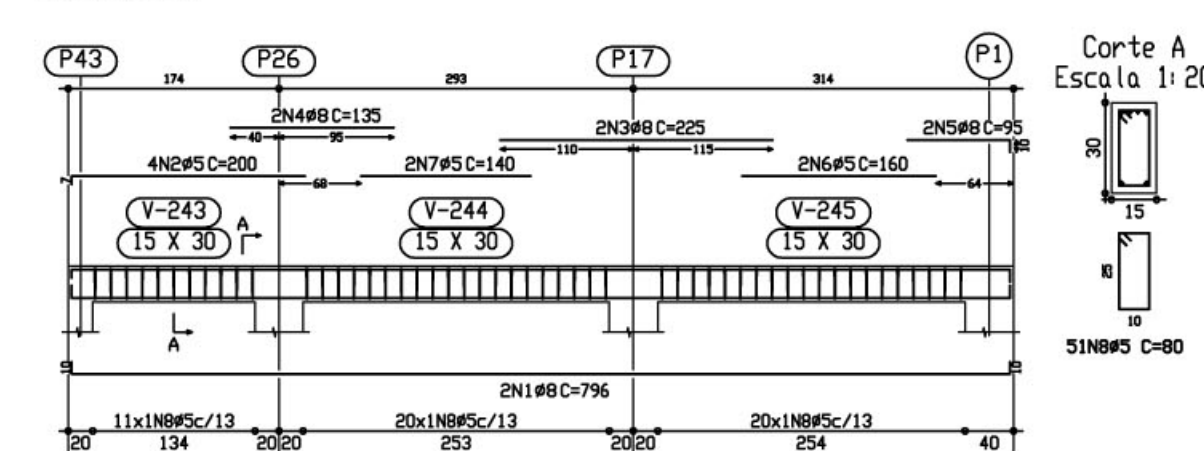


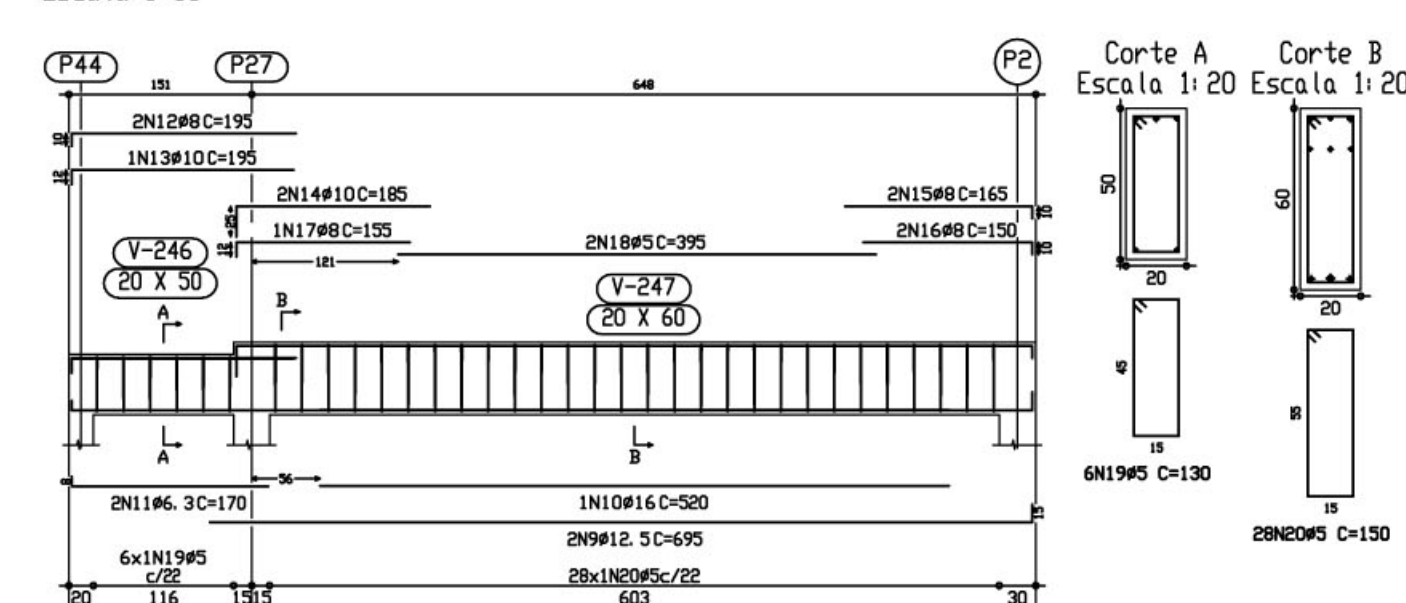
Pórtico 7
Escala 1:50



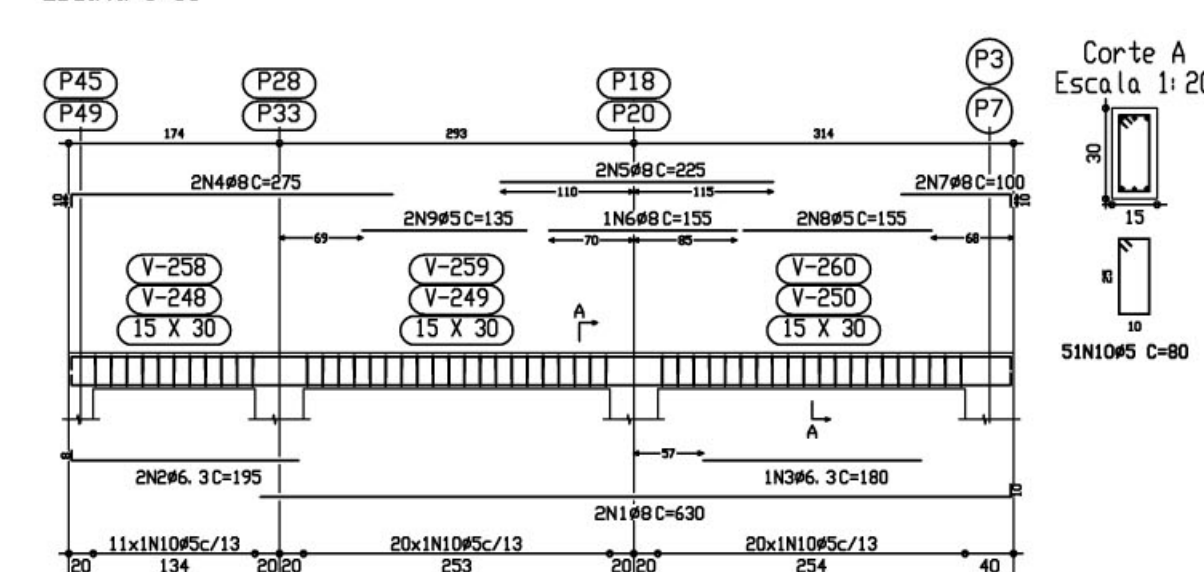
TEITO
Desenho de vigas
Barras: C20, em geral
Aço: CA-50-A e CA-60-B
Escala pórtico: 1:50
Escala seção: 1:20

Elemento	Pos.	Diam.	Q.	Pat. (cm)	Recta (cm)	Pat. (cm)	Comp. (cm)	Tota (cm)	CA-50-ACA-60-B (Kg)	
Pórtico 7	1	#8	2	10	776	10	796	1592	6.2	
	2	#5	7	193	200	200	193	790	1.0	
	3	#8	2	10	825	10	845	1690	6.4	
	4	#8	2	10	825	10	845	1690	6.4	
	5	#8	2	10	825	10	845	1690	6.4	
	6	#5	7	193	200	200	193	790	1.0	
	7	#5	7	193	200	200	193	790	1.0	
	8	#5	7	193	200	200	193	790	1.0	
Total+102									33.8	
Pórtico 8	9	#12.5	2	680	15	695	1390	33.6	9.9	
	10	#16	1	320	320	320	320	8.2	2.2	
	11	#6.3	8	162	170	340	0.8	0.2	0.0	
	12	#8	2	10	185	195	390	1.5	0.4	
	13	#10	2	12	183	195	378	1.2	0.3	
	14	#10	2	12	183	195	378	1.2	0.3	
	15	#8	2	10	165	330	1.3	0.3	0.0	
	16	#8	2	10	140	150	300	1.2	0.3	
	17	#8	2	10	143	155	298	1.2	0.3	
	18	#5	4	795	390	780	1.2	0.3	0.0	
	19	#5	4	795	390	780	1.2	0.3	0.0	
	20	#5	4	795	390	780	1.2	0.3	0.0	
Total+102									38.8	
									#5	0.0
									#6.3	0.9
									#8	15.8
									#10	3.9
									#12.5	15.0
									#16	9.0
									Total	44.6

Pórtico 8
Escala 1:50

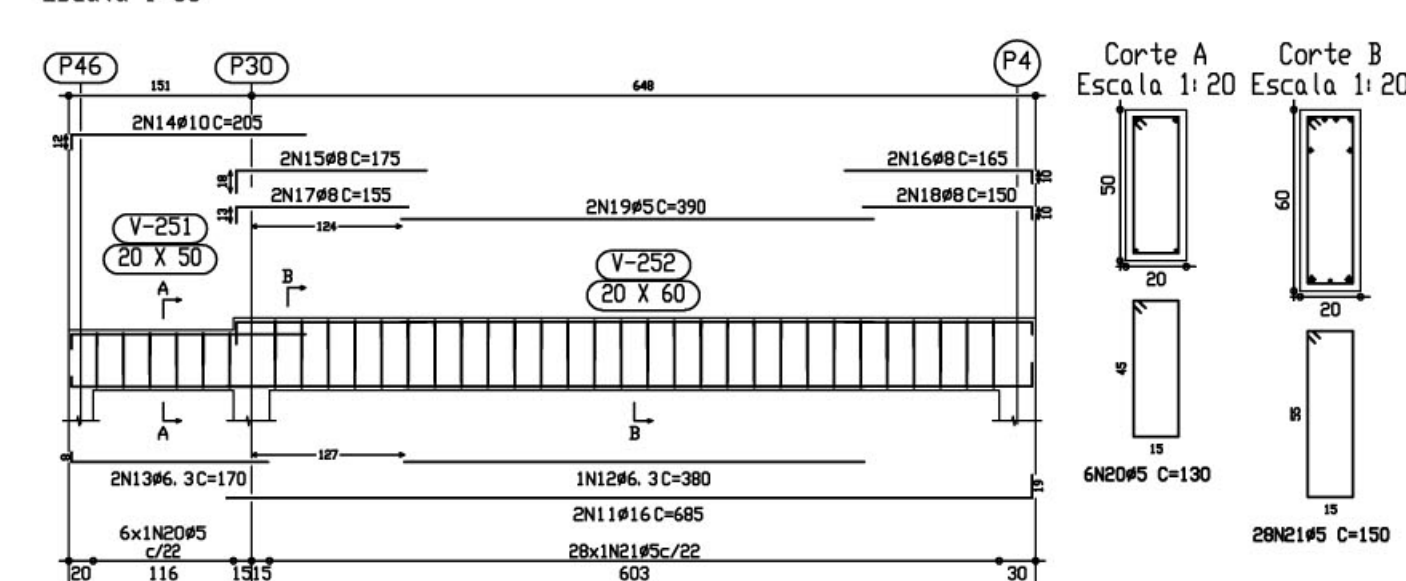


Pórtico 9
Pórtico 13
Escala 1:50



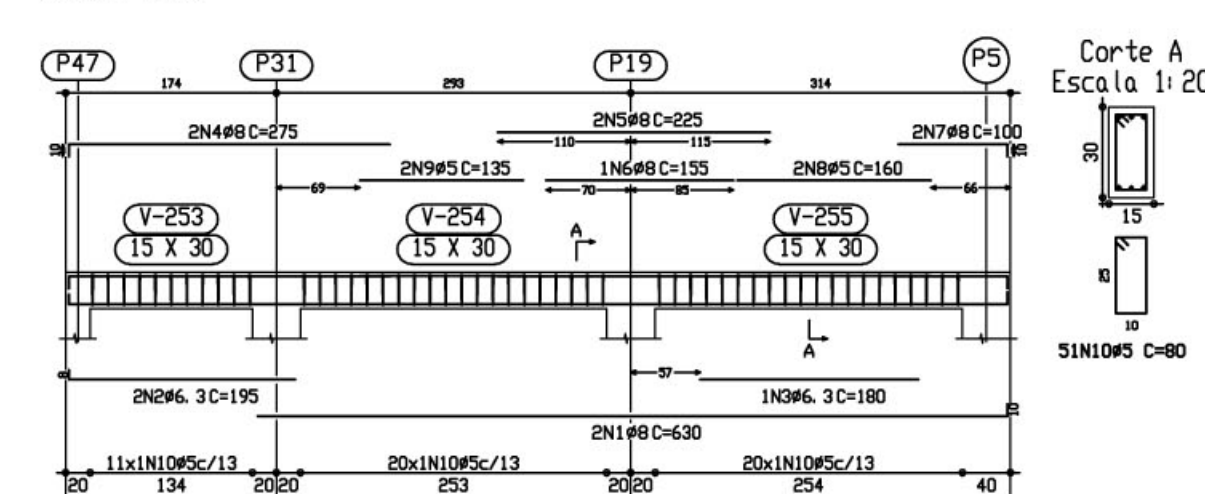
Elemento	Pos.	Diam.	Q.	Pat. (cm)	Recta (cm)	Pat. (cm)	Comp. (cm)	Tota (cm)	CA-50-ACA-60-B (Kg)	
Pórtico 9/Pórtico 13	1	#8	2	10	620	10	630	1260	4.9	
	2	#6.3	8	187	190	380	0.9	0.2	0.0	
	3	#6.3	8	187	190	380	0.9	0.2	0.0	
	4	#8	2	10	260	270	530	2.2	0.6	
	5	#8	2	10	260	270	530	2.2	0.6	
	6	#8	2	10	135	155	290	1.8	0.5	
	7	#8	2	10	100	200	0.8	0.2	0.0	
	8	#5	7	135	155	310	0.5	0.1	0.0	
	9	#5	7	135	155	310	0.5	0.1	0.0	
	10	#5	7	135	155	310	0.5	0.1	0.0	
Total+102									12.9	
Pórtico 10	11	#16	2	666	19	685	1370	31.5	8.8	
	12	#6.3	8	187	190	380	0.9	0.2	0.0	
	13	#6.3	8	187	190	380	0.9	0.2	0.0	
	14	#10	2	12	193	205	410	2.6	0.7	
	15	#8	2	10	185	195	390	1.4	0.4	
	16	#8	2	10	165	330	1.3	0.3	0.0	
	17	#8	2	10	142	155	310	1.2	0.3	
	18	#8	2	10	140	150	300	1.2	0.3	
	19	#5	4	790	390	780	1.2	0.3	0.0	
	20	#5	4	790	390	780	1.2	0.3	0.0	
	21	#5	4	790	390	780	1.2	0.3	0.0	
	Total+102									34.0
									#5	0.0
									#6.3	5.0
									#8	28.2
									#10	2.9
									#16	23.7
									Total	39.8

Pórtico 10
Escala 1:50



TEITO
Desenho de vigas
Barras: C20, em geral
Aço: CA-50-A e CA-60-B
Escala pórtico: 1:50
Escala seção: 1:20

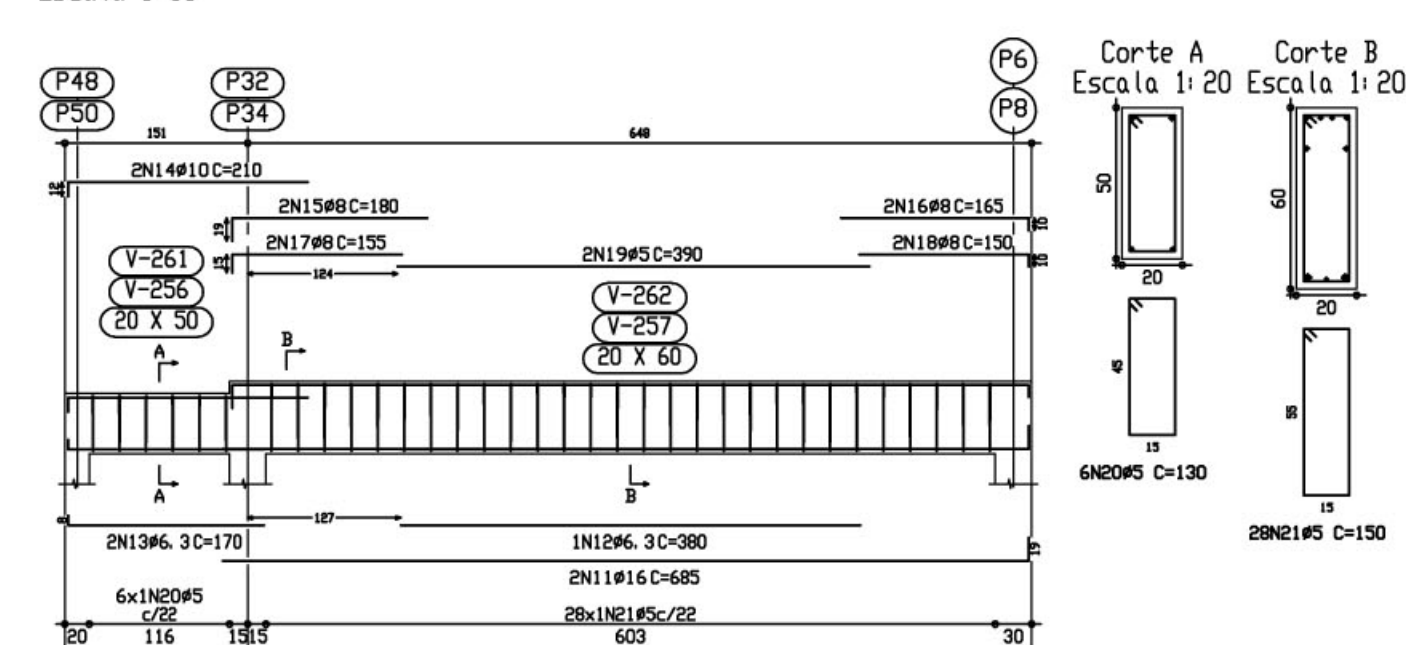
Pórtico 11
Escala 1:50



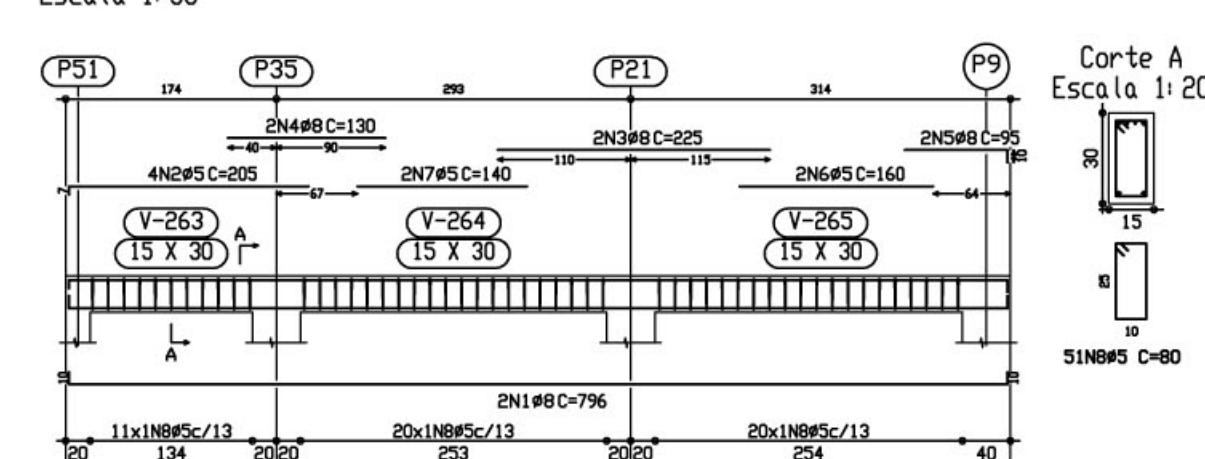
TEITO
Desenho de vigas
Barras: C20, em geral
Aço: CA-50-A e CA-60-B
Escala pórtico: 1:50
Escala seção: 1:20

Elemento	Pos.	Diam.	Q.	Pat. (cm)	Recta (cm)	Pat. (cm)	Comp. (cm)	Tota (cm)	CA-50-ACA-60-B (Kg)	
Pórtico 11	1	#8	2	10	620	10	630	1260	4.9	
	2	#6.3	8	187	190	380	0.9	0.2	0.0	
	3	#6.3	8	187	190	380	0.9	0.2	0.0	
	4	#8	2	10	255	265	520	2.0	0.4	
	5	#8	2	10	255	265	520	2.0	0.4	
	6	#5	7	160	160	320	0.4	0.1	0.0	
	7	#5	7	160	160	320	0.4	0.1	0.0	
	8	#5	7	160	160	320	0.4	0.1	0.0	
Total+102									12.9	
Pórtico 12/Pórtico 14	11	#16	2	666	19	685	1370	31.5	8.8	
	12	#6.3	8	187	190	380	0.9	0.2	0.0	
	13	#6.3	8	187	190	380	0.9	0.2	0.0	
	14	#10	2	12	198	210	420	2.6	0.7	
	15	#8	2	10	165	330	1.4	0.4	0.0	
	16	#8	2	10	140	150	300	1.2	0.3	
	17	#8	2	10	140	150	300	1.2	0.3	
	18	#8	2	10	140	150	300	1.2	0.3	
	19	#5	4	790	390	780	1.2	0.3	0.0	
	20	#5	4	790	390	780	1.2	0.3	0.0	
	21	#5	4	790	390	780	1.2	0.3	0.0	
	Total+102									34.0
									#5	0.0
									#6.3	5.0
									#8	28.5
									#10	3.8
									#16	24.4
									Total	80.9

Pórtico 12
Pórtico 14
Escala 1:50



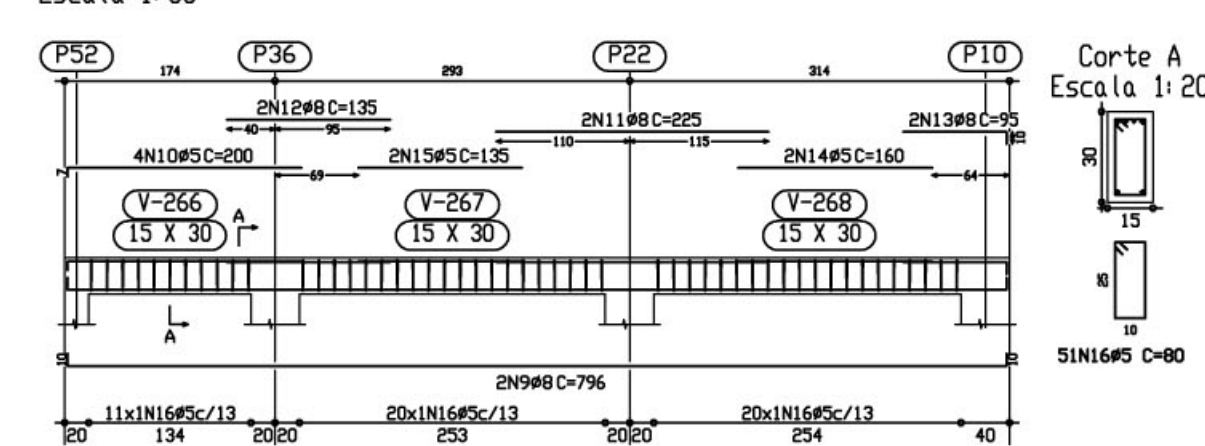
Pórtico 15
Escala 1:50



TEITO
Desenho de vigas
Barras: C20, em geral
Aço: CA-50-A e CA-60-B
Escala pórtico: 1:50
Escala seção: 1:20

Elemento	Pos.	Diam.	Q.	Pat. (cm)	Recta (cm)	Pat. (cm)	Comp. (cm)	Tota (cm)	CA-50-ACA-60-B (Kg)		
Pórtico 15	1	#8	2	10	776	10	796	1592	6.2		
	2	#5	7	198	205	400	1.3	0.3	0.0		
	3	#8	2	10	825	10	845	1690	6.4		
	4	#8	2	10	825	10	845	1690	6.4		
	5	#8	2	10	825	10	845	1690	6.4		
	6	#5	7	198	205	400	1.3	0.3	0.0		
	7	#5	7	198	205	400	1.3	0.3	0.0		
	8	#5	7	198	205	400	1.3	0.3	0.0		
Total+102									10.7		
Pórtico 16	9	#8	2	10	776	10	796	1592	6.2		
	10	#5	7	193	200	400	1.3	0.3	0.0		
	11	#8	2	10	825	10	845	1690	6.4		
	12	#8	2	10	825	10	845	1690	6.4		
	13	#8	2	10	825	10	845	1690	6.4		
	14	#5	7	193	200	400	1.3	0.3	0.0		
	15	#5	7	193	200	400	1.3	0.3	0.0		
	16	#5	7	193	200	400	1.3	0.3	0.0		
	Total+102									10.8	
										#5	0.0
										#8	15.0
										#15	5.0
									Total	25.5	

Pórtico 16
Escala 1:50



ENDEREÇO: DIVERSOS
 PROPRIETÁRIO: FUNDO DE FORTALECIMENTO PARA A ESCOLA
 AUTOR DO PROJETO: MANOEL FERNANDO PEREIRA SANTOS
 RESPONSÁVEL TÉCNICO:
 PROPRIETÁRIO _____
 AUTOR DO PROJETO _____
 AUTOR DO PROJETO _____
 RESP. TÉCNICO _____

